

Regional Transmission Initiative Technical Meeting

October 7, 2022

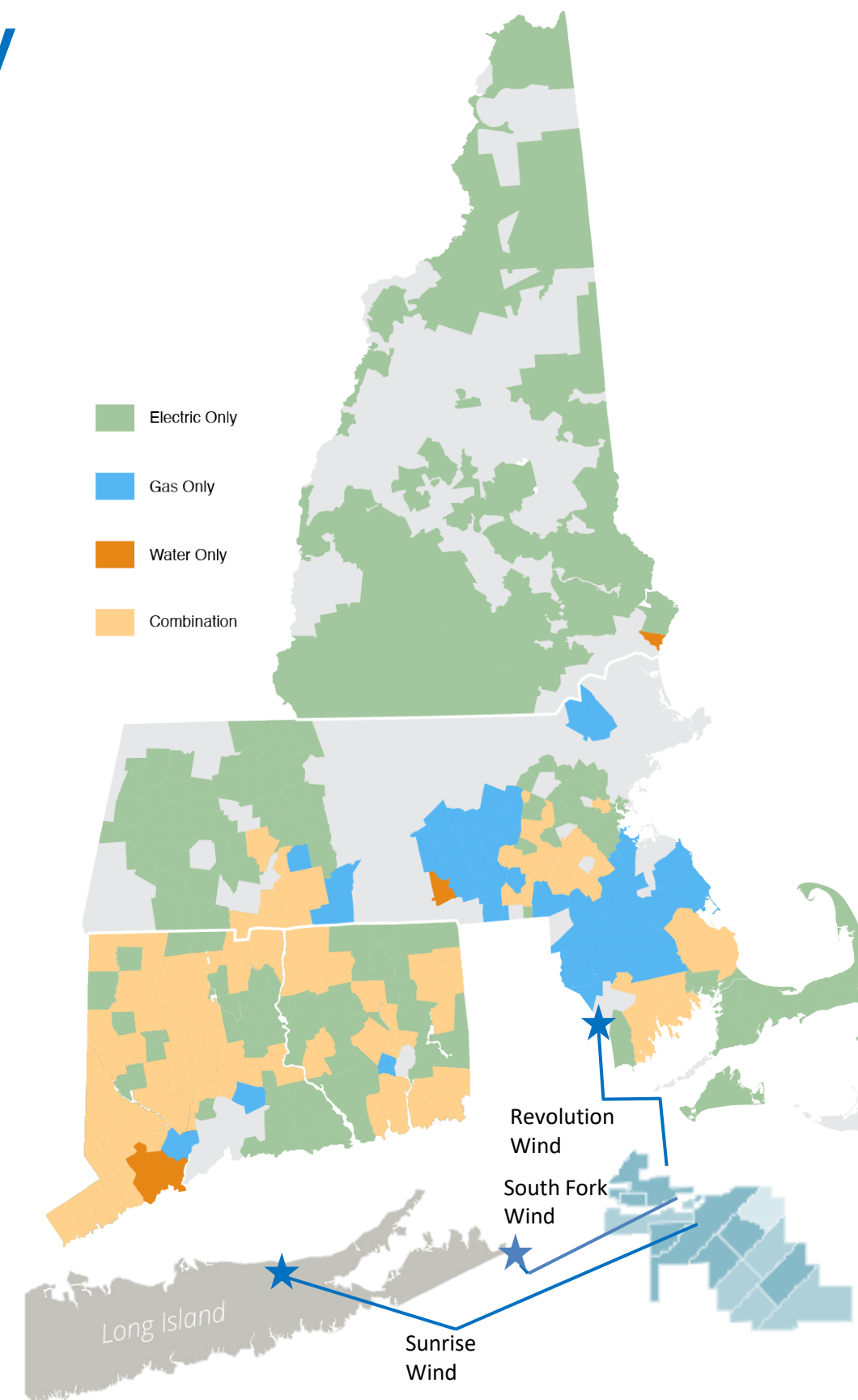
Dave Burnham

Director, Transmission Policy

Eversource Energy

Eversource: New England's Largest Utility and a Catalyst for Clean Energy

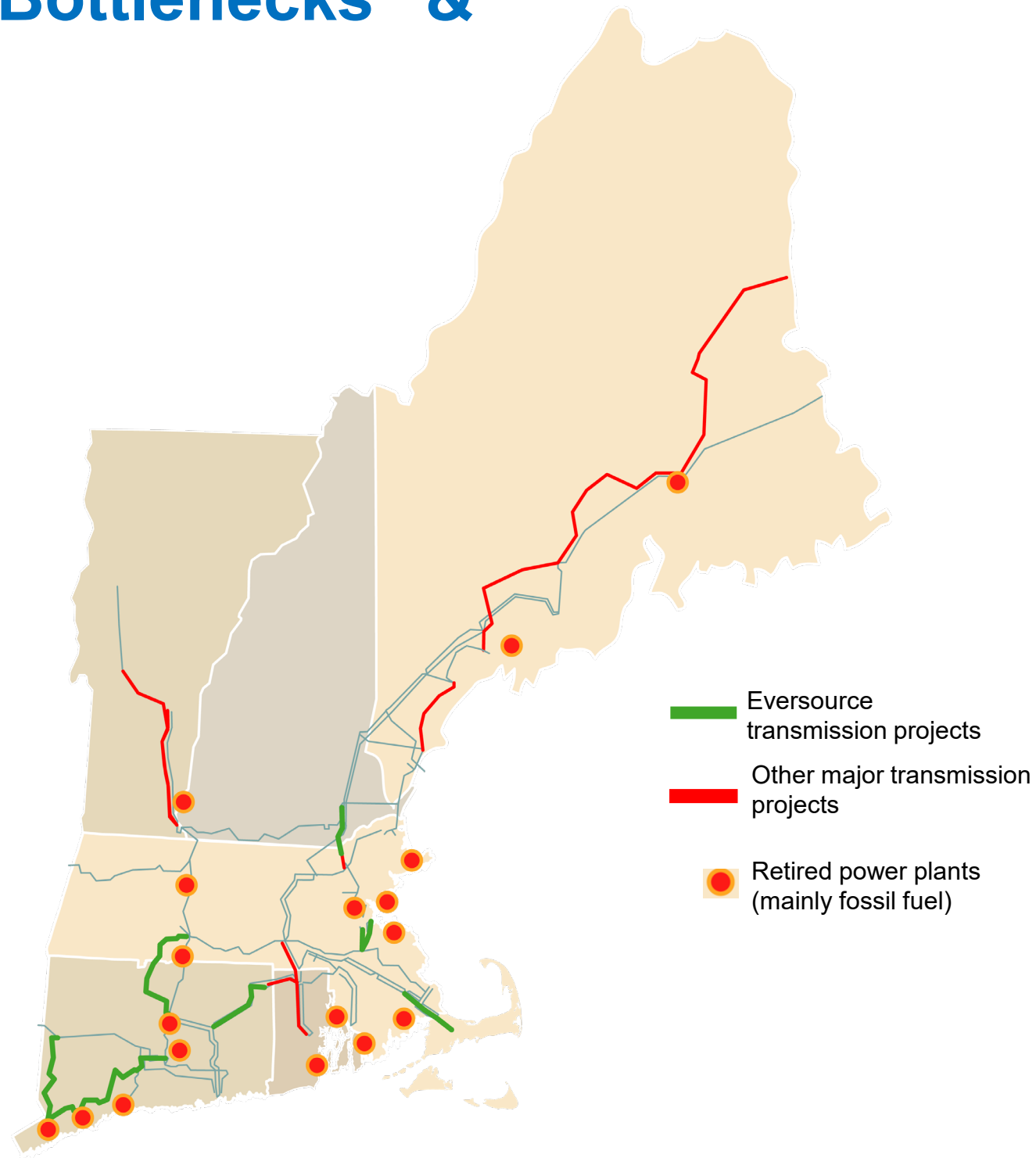
- Provides **electric, gas, and water** services
- 4.3 million customers
- 9,100 employees
- Operates 49% of New England's transmission system
- **Carbon Neutral** by 2030
- Partnership with Ørsted to provide **~1700 MW of offshore wind power** to New England and New York



A History of Solving Grid “Bottlenecks” & Improving Reliability

2005-2020:

- **8** major transmission programs
- **\$11B** investment
- **\$600M** in annual customer savings
- Over **6,000** MW of baseload generation retired since 2000
- **36%** reduction in CO₂ emissions



New England is Facing an Unprecedented Energy Crisis

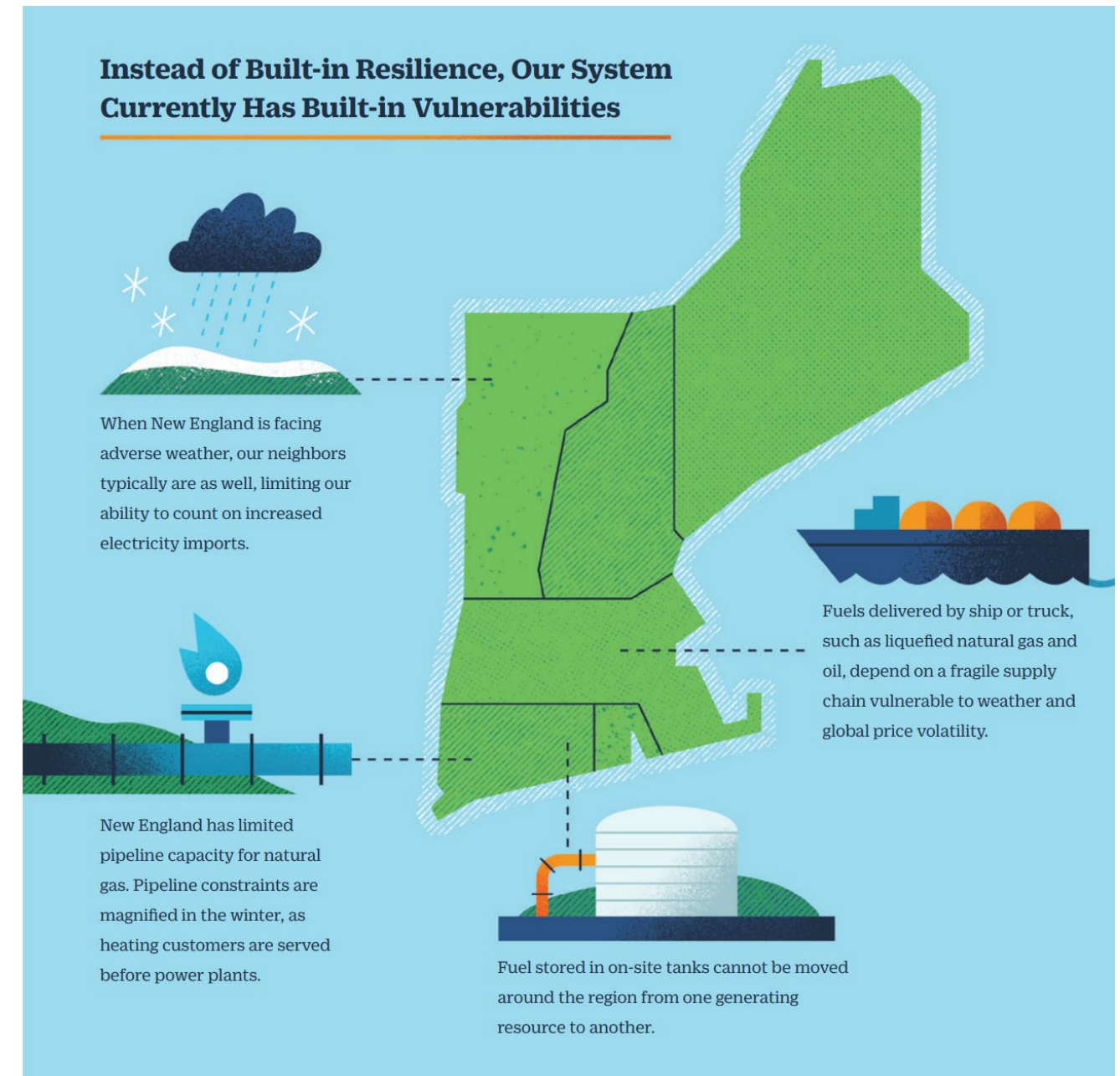
Lack of a reliable energy supply during winter

Growth in clean energy resources requires a more robust grid

Economy-wide decarbonization goals driving electrification

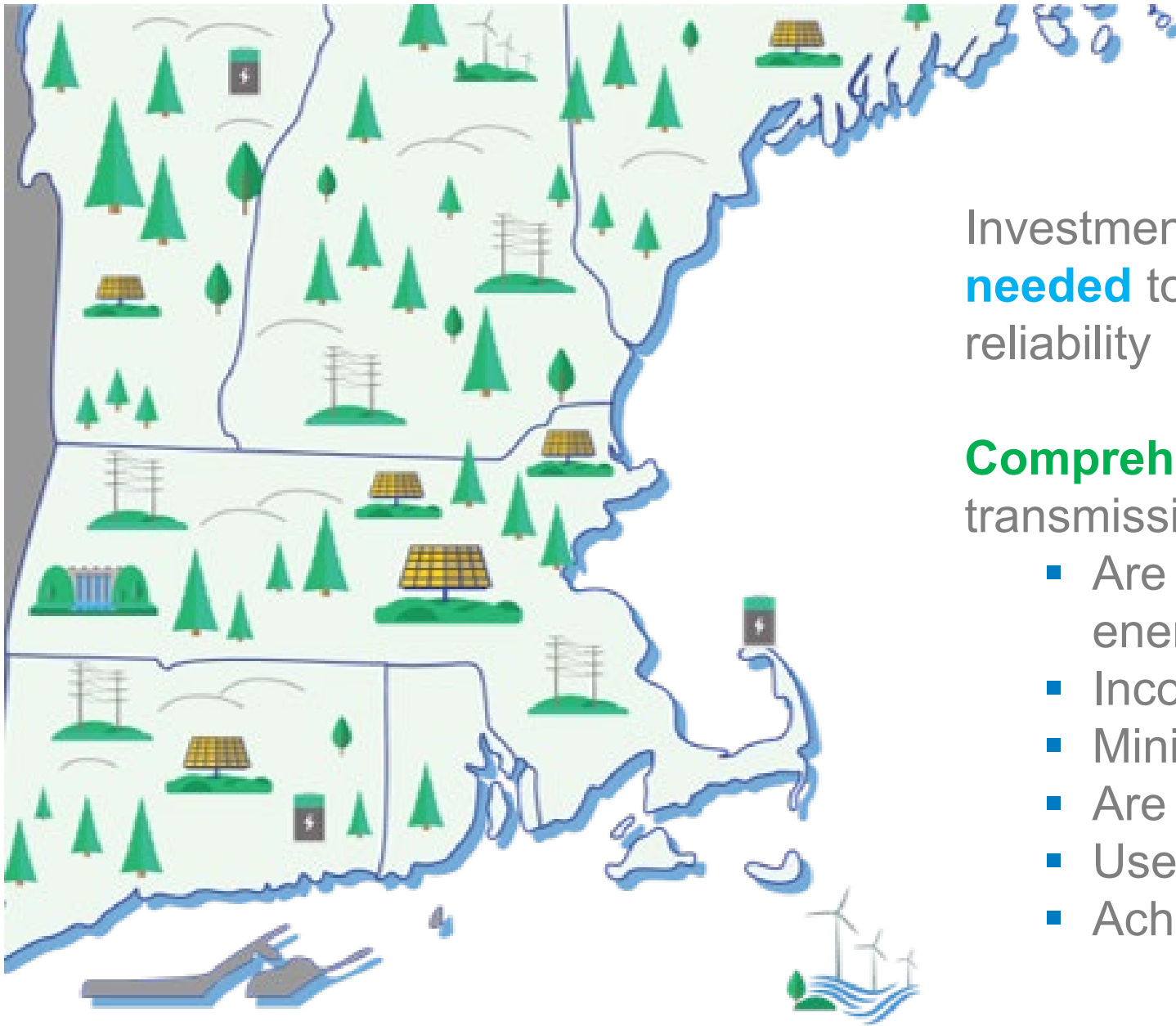
Aging infrastructure needs modernization

Extreme weather increasing in frequency and severity



Source: ISO New England

Transmission Investments Should be Developed Collaboratively

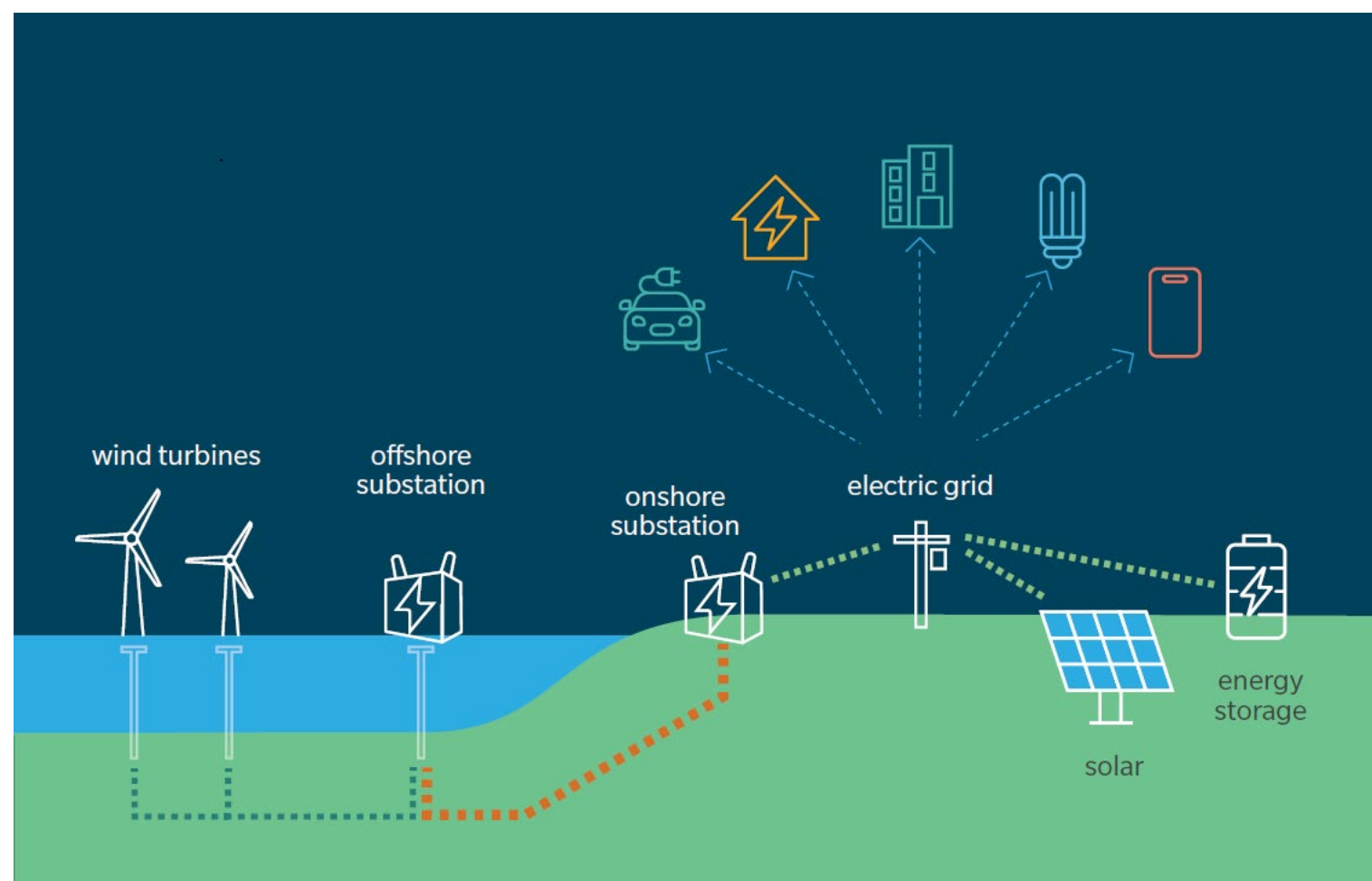


Investments in the region's transmission system are **urgently needed** to integrate renewable energy resources and improve reliability

Comprehensive, collaborative planning will help ensure that transmission investments:

- Are planned proactively to enable the region's clean energy future
- Incorporate input from customers and communities
- Minimize community and environmental impacts
- Are constructed as quickly as possible
- Use co-optimization to address multiple needs
- Achieve the lowest overall costs to consumers

Coordinating Transmission Development with Offshore Wind Procurements Offers Multiple Benefits



Closely coordinating transmission development with procurement of offshore wind will minimize costs and project risks

Holistic planning can achieve economies of scale with a regional approach

New England coastline offers **many points-of-interconnection**

Utilizing diverse points of interconnection **reduces costs and improves reliability**

Successful Transmission Solutions Will Combine Grid Reliability, Resiliency, and Clean Energy

Co-optimized transmission solutions to address both reliability needs and interconnect offshore wind

Energy storage solution to provide essential back-up power for resiliency

Proactively planning for clusters of distributed generation and integrating with local transmission projects

